

Körber Supply Chain

Effective warehouse management

for the dynamic supply chain

Managing distribution gets more challenging by the day. Today's dynamic business environment requires logistics professionals to implement innovative solutions to effectively manage complex global supply chains while simultaneously reducing operational expenses.



The bottom line: Operational excellence

Our warehouse management solutions optimize work direction at an operational level to dramatically increase efficiency and drive down costs—empowering operational excellence, on-time customer orders and, ultimately, customer satisfaction.

Drive increased productivity

Our solutions not only maximize efficiency and worker safety, but their advanced functionality increases inventory turns and provides detailed worker accountability, resulting in heightened productivity.

Directed, optimized warehouse activities reduce picking time and product touches by allowing you to seize cross-docking opportunities. It also minimizes travel paths with slotting/re-slotting functionality, optimizes picking execution with user-configured algorithms, and intelligently directs put-away to the appropriate bins based on product handling characteristics. Furthermore, our solutions virtually eliminate the need for non-value added activities such as manual work verification and shipment audits.

Avoid costly errors with up to 99+% accuracy

Through real-time work direction, confirmation and verification, our solutions provide your employees and their managers with immediate feedback on work accuracy. An accurate system ensures workers are not looking for missing inventory or overloading any given location.

Boost on-time and complete shipments

The accurate order picking functionality of Körber's warehouse management solutions allow you to deliver complete orders on time. Increased fill rates and decreased cycle times allow you to avoid shipping delays and back-orders that jeopardize valuable customer relationships. In addition, overall process efficiency decreases cycle time, resulting in more on-time shipments.





Our uniquely adaptable architecture empowers fast, low cost business process (workflow) configuration for changing business requirements. This is essential to your ability to accommodate changing business and customer demands easily and without jeopardizing your operations or budget.

The result: the lowest total ownership of any solution in the industry.

Optimize warehouse space

Körber's warehouse management solutions provide directed stock rotation, intelligent picking directives, automatic consolidation, and cross-docking to maximize the use of valuable warehouse space. The system also directs and optimizes put-away based on accurate, real-time information about the status of bin utilization.

Reduce shrinkage and spoilage

Our solutions facilitate real-time monitoring and enforce FIFO rotation to reduce spoilage. In addition, high levels of worker accountability empower you to detect shrinkage problems.

Increase revenue opportunities

The flexible processes accommodate personalized, value-added service requirements such as kitting, compliance labeling, returns management, promotional material insert handling and warranty tracking.

Exceed customer expectations

You will be empowered to consistently deliver on customer promises with the ability to reduce cycle times, stock-outs and back-orders; improve order accuracy and on-time shipments; and offer unique services.

Achieve maximum ROI in minimum time

With immediate gains in operational efficiencies, you can achieve fast ROI on your warehouse management system. In fact, payback is often less than 12 months.

“Körber software has enabled us to be more productive without a huge increase in IT staff. Our growing business is demanding and the Körber solutions give us the agility we require without compromise. It has been the perfect WMS system for our fulfillment center and its ever changing needs.”

- Carter Lee, VP Information Systems
Overstock.com

Comprehensive warehouse management functionality

- **Receiving**
 - ASN receipt
 - Vendor receipt
 - Unknown receipt
 - Production receipt
- **Returns**
 - Customer return
 - Production return
- **Rules-based put-away**
- **Cross-docking**
- **Rules-based directed picking**
 - FEFO, LIFO, LEFO, pick to clean, pick to efficiency
- **Picking**
 - Batch pick
 - Wave pick
 - Zone pick
 - Bulk pick
 - Order pick
 - Progressive pick
- **Packing**
- **Loading**
- **Loading audit**
- **Shipping**
- **Replenishments**
- **Kitting**
 - Kit component request
 - Kit picking
 - Kit completion
 - Kit tear-down
- **Movements**
 - Directed movement
 - Move request
- **Warehouse transfers**
 - Transfer out
 - Transfer in
- **Quality control**
 - QC hold and release
 - Lot control
- **Administration**
 - Cycle counts
 - Inventory adjustments
 - Physical
- **Advanced warehousing features**
 - Labor management
 - Appointment scheduling/yard management
 - Slotting optimization
 - Wave planning
 - Load planning
 - Value-added services
 - Optimized container packing
 - Billing management
 - RFID compliance
 - Task interleaving
- **Inventory tracking**
 - Lot control
 - Dynamic tracking of item attributes (i.e. manufacturer date, owner, style color size, etc.



Features

In addition to the robust functionality, Körber offers advanced features to further streamline warehouse operations and reduce costs.

Container packing

With Körber's optimized container packing functionality, you can develop an efficient plan to organize the placement of items into shipping cartons – which saves significant time, packing materials, containers and shipping expenses in the picking and packing of customer orders. This functionality also empowers you to improve efficiency by selecting the number and size of cartons needed to pack orders for shipment based on each item's dimensional cube, orientation restrictions, stacking factors, weight and compatibility with other items.

Slotting

Körber's slotting and re-slotting solution optimizes the storage of goods in your warehouse to improve productivity and facility throughput. Slotting capability can provide ROI information on re-slotting of products based on picking velocity and employee costs. This functionality integrates seamlessly with Körber's warehouse management solution to create and maintain an efficient warehouse layout and product placement strategy that reduces travel time and streamlines material handling and space efficiency.

Wave and load planning

Körber's wave and load planning capability enables ultimate flexibility in releasing work to the floor. It features user-configured views of available orders for planning truckloads or pick waves, including assignment of warehouse staging locations, dock doors and shipment drop sequences. You can build a wave and then optimize within the wave for optimal load planning, or vice-versa. By optimizing the variables that are most critical to your organization, you are able to substantially decrease cycle times. Once loads or waves are planned, you have complete control over pick release staging and shipping, and can manage last-minute changes with ease.

Labor management

The Körber labor management solution gives you the ability to plan, measure and view labor activities within your organization to increase efficiency. Visibility tools provide real-time data on performance actuals versus standard, KPIs and utilization, which allows you to detect inefficiencies and take corrective action. You'll also be able to reduce unproductive activity and its associated cost by tracking indirect labor.

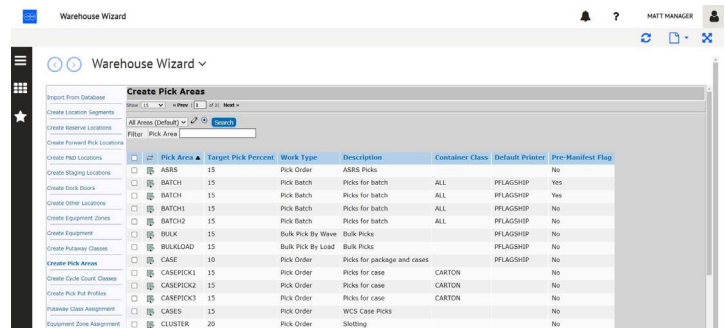
3PL billing management

Körber billing management helps ensure maximum revenue and minimal billing cycle time by enabling activity based billing of each client according to individual contracts. Appropriate charges are automatically generated for storage of goods and any other services you perform as a logistics services provider.



Adaptable solutions that differentiate your business

While the robust standard functionality of our warehouse management solution leverages best practices to meet many of your immediate and comprehensive operational needs, the best solution must also successfully address the unique and ever-changing business and customer requirements that empower you to deliver enhanced value to your customers. Rather than requiring you to change your business to fit the software, Körber is the only supply chain execution company that has created a core architecture that empowers you to easily adapt the system to meet your specific needs – without the use of custom code – in a fraction of the time of conventional systems, and at a fraction of the cost. And because all changes are external to the core software, upgrades and support are not compromised. This guarantees low total cost of system ownership.



Configuration Wizard

Simplified rollout for large and complex environments

Körber's warehouse management solution has a proven track record of success in high-volume, complex logistics environments across many industries. This success is made possible by the exceptional scalability and adaptability of the Körber solution architecture.

- Our solutions utilize features such as multi-threading, multi-processing and in-memory applications, empowering the system to run at optimal speed.
- Vertical and horizontal scalability are also possible through additional CPUs and features like network load balancing (NLB).
- Körber fully supports centralized IT deployments which allows for easy central reporting of activity across all sites.
- Körber adaptability tools allow you to exert complete control over your system—and your budgets—by easily making changes to your system.
- Our warehouse management solution features an easy-to-use and consistent Web-based user interface, which means fewer training hours for your staff.
- All changes to Körber solutions are made without altering the source code. The result: simplified upgrades and none of the costs and application support burdens that typically accompany source code customization.
- Körber offers full support for multi-national facilities and supply chain processes. Our solution is fully Unicode-enabled and ships with twelve languages.

Web enablement

Körber's entire user interface features an easy-to-use and consistent web approach that makes training simple. This web interface can be easily configured by the end-user to make the content more relevant to your company's specific needs. The system can also be deployed over the Web to eliminate the administration and overhead required to deploy a traditional 'fat client' interface and significantly reduce telecommunications costs. Through a combination of SOA and web-based reporting, Körber applications are able to communicate seamlessly with your order management, planning, voice, transportation and external supply chain systems, as well as support partner, supplier, vendor and customer networks. Support for International

Operations

Körber offers full support for your multinational facilities and supply chain processes. Körber operates in more than 65 countries and serves clients in more than 200, which gives you the assurance that both your domestic and international operations can be effectively supported. Our solutions have been fully Unicode-enabled and ships with twelve languages out of the box with the base WMS including:

English, German, French, Dutch, Portuguese, Italian, Spanish (Mexico, Chile, Venezuela), Czech, Polish, Russian, Simplified Chinese, and Japanese. Live implementations in each of these languages are available as well.

WMS in the cloud

Körber Software also offers its warehouse management software in a cloud deployment model, eliminating much of the cost and administration time necessitated by installed software. Just like the installed version, Körber WMS in the cloud provides a foundation of best practices for receiving, put-away/flow-through, inventory management, order processing, replenishment, pick/pack, loading and shipping, as well as the ability to build their own industry-leading business processes using our business process configuration tools. You access the WMS via a web browser and gain the functional benefits of new warehouse management software without the upfront software and hardware costs or IT drain.

System integration

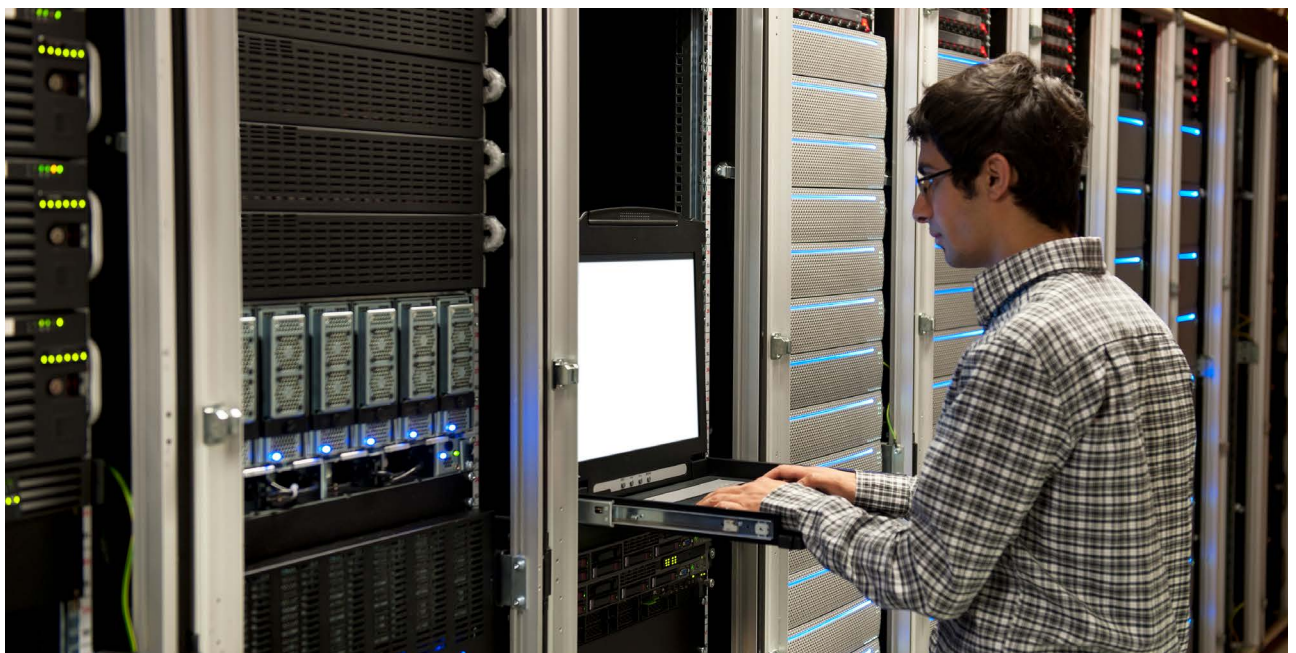
Körber's leading-edge integration solution links your Körber system to your existing business systems to help ensure the fast, accurate exchange of data. Our solution provides seamless enterprise application integration (EAI) without the need for custom interfaces and third-party integration tools. This powerful solution features standard, certified interfaces to PeopleSoft®, Microsoft® and SAP®. It also offers a wealth of communication mechanisms, including:

- XML
- JSON
- RESTful Webservices
- PeopleSoft® Application Messaging and Message Agent
- SAP® R/3® IDocs, sRFC and BAPI®
- IBM® AS/400® online
- TCP/IP sockets
- ODBC
- Flat file
- IBM® WebSphere® MQ

For warehousing operations, our solution provides seamless integration between our warehouse management solutions and a variety of material handling equipment, such as AS/RS, carousels and conveyors.

“Each upgrade has been transparent to the end user. Körber has demonstrated itself again and again to be a proven product with low total-cost-of-ownership. It is definitely one of our most important enabling software decisions.”

– Ted Jackson, VP of IT and COP
Sport Chalet, Inc.



The Körber difference: Delivering the lowest total cost of ownership in the industry

Körber's solutions provides a comprehensive suite of supply chain execution (SCE) solutions that control and optimize the flow of inventory throughout the extended supply chain from suppliers through consumption. Körber's solutions combine the functionality and flexibility you require to effectively meet customer expectations, reduce costs and achieve low total cost of ownership.

The Körber approach

- Robust base application encapsulates thousands of best practices gleaned from 700+ successful implementations configured through the selection of switches, parameters and rules
- Standard functionality to meet 95% of your business requirements
- All solutions built on powerful adaptability platform

Standard functionality provided

- Every business has unique processes, services and distribution models that enable it to maintain and enhance competitive advantage. No vendor can anticipate all of the pre-configured switches, parameters and rules to support them.
- Anything beyond functionality of switches simply requires using Körber's adaptability tools to configure business logic instead of modifying source code. The result: lower total cost of ownership, faster implementations and ROI, and less risk

Future system modifications without custom code

- Adaptability tools empower you to respond quickly and inexpensively to ever-changing customer requirements without custom code
- Lower total cost of ownership
- Ability to respond faster to customer demands

Platform upgrade process

- Because your business logic is stored separately from the application, it is unaffected by the upgrade process
- Upgrades take hours, not months, significantly reducing costs
- Vast majority of Körber customers upgrade

Our competitor's approach

- Robust base application encapsulates thousands of best practices configured through the selection of switches, parameters and rules (varies by competitor)
- Standard functionality to meet 95% of your business requirements

Standard functionality provided

- No vendor can anticipate all of the pre-configured switches, parameters and rules to support unique processes, services and distribution models.
- Anything beyond functionality of switches requires custom code modifications, inefficient operational workarounds, or waiting until a switch appears in later versions of the software. The result: the use of expensive, time consuming and risky custom code and loss of competitive advantage.

Future system modifications with custom code

- New business processes often extend beyond predetermined switches and require custom code
- Exceed budgets as all future modifications require expensive custom code; You and your budget are tied to the vendor
- Inability to quickly respond to customer demands

Significant reapplication of code required during upgrade process

- Requires all previous custom code to be re-applied at your expense – nothing carries forward
- Upgrades take months and can cost as much as implementing an entirely new system
- In many cases, vendor forces complex upgrades as a way of generating additional revenue

Standard functionality + additional implementation functionality + ability to adapt to change after implementation + system upgrades = Total cost of ownership

Clients across multiple verticals

Körber solutions offer vertical-specific functionality and adaptability that enables solutions to fit a variety of customer requirements in industries such as 3PL, and automotive, manufacturing, pharmaceutical, consumer goods, discrete manufacturing, food and beverage, retail and wholesale distribution/industrial production.

Körber's 4,500+ worldwide clients include Ashley Furniture, Bimbo Bakeries USA, CARQUEST, Circuit City, Commercial Mexicana, Earthbound Farm, Flowers Foods, Fuji Xerox Australia, gm2 Logistics, InBev, Maersk, Overstock.com, PepsiAmericas, Polaroid, Quality Bicycle Products, Singapore Airlines, Uponor North America and Yamaha Motor Corporation, USA.



Client commitment

Körber believes that you should expect – and receive – nothing but the highest quality not only during the implementation of your project, but also once you are up and running on K.Motion Warehouse Advantage.

Best practices-based implementation

Körber's Software delivers implementations that are on time, on budget and on target with customer requirements. This is accomplished by making the delivery process predictable, focused and tightly controlled while simultaneously applying proven and acknowledged supply chain best practices through experienced industry professionals.

Ongoing training at Körber Academy

Körber Academy is Körber's Learning Management System (LMS). The LMS delivers courses to learn Körber solutions. We use a blended approach – combining eLearning with instructor-led trainings and virtual labs. Körber Academy offers a comprehensive suite of trainings to provide skills and knowledge to run your Körber solution successfully.

In addition to eLearning, we also offer the option to attend hands-on training at our headquarters in Minneapolis. We also offer instructor-led training at your site for four, or more, students.

24/7 Worldwide customer support

Körber offers 24/7 staffed support for your Körber warehouse management system. Körber's Worldwide

Support team is well-versed in the details of your solution and is ready to assist you in troubleshooting and problem resolution.

This team of full-time technicians is educated in industry needs and combines that knowledge with the specifics of your application.

Annual user conference

Each year, Körber clients, partners, employees and industry analysts meet to exchange ideas on the latest trends in warehouse management and supply chain execution. Clients learn how to leverage their solutions to achieve increased efficiencies and maintain competitive advantage by participating in interactive product feedback sessions, analyzing client case studies and working with peers and industry thought leaders in one-on-one and focus group settings.

Dedicated client management

Körber has taken several measures to establish and maintain two-way communication between our team and each client. A dedicated project team works with you throughout the implementation and then transitions your account to Worldwide Support. Körber's client management team works with you from the beginning of the sales cycle through implementation and beyond to communicate your questions, concerns and ideas directly to the executive team.

A key component of your total supply chain execution solution

Körber's comprehensive collection of supply chain execution solutions empowers you to build upon the Körber warehouse management foundation to achieve even greater benefits within your warehouse and throughout your supply chain. Each solution features Körber's trademark combination of robust functionality, the foundation for quickly and cost-effectively adapting to change.

Supplier execution enablement

Körber's supplier execution enablement solution improves facility flow-through by increasing collaboration and promoting effective exception management between your distribution center and your supplier network – without the expense of EDI.

Manufacturing execution

From receipt of materials to shipping of product and everything in between, Körber provides manufacturers with the tools necessary to increase productivity, eliminate non value-add activities, decrease operating costs and eliminate the potential for errors and waste.

Labor management

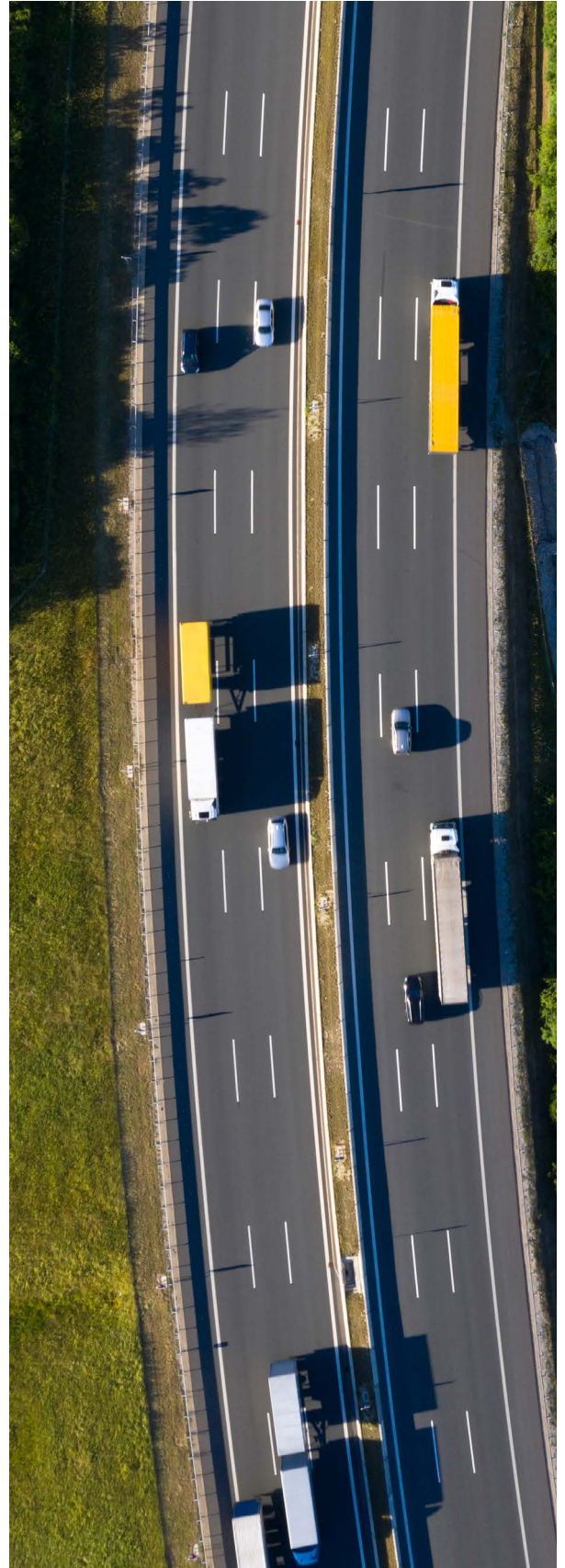
Körber's labor management solution gives you the ability to plan, measure and view labor activities within your organization to increase efficiency. Visibility tools provide real-time data on performance actuals versus standard, KPIs and utilization, which allows you to detect inefficiencies and take corrective action.

Transportation management

Whether implemented as a stand-alone system or as part of a comprehensive solution, Körber's transportation management solution decreases transportation planning time and achieves cost savings through order consolidation/ load optimization, best-way routing, tendering, tracking and proof of delivery.

Delivery management

Körber software offers a number of solutions focused on last-mile delivery management. Applications for route accounting, load optimization, mobile pre-sales, mobile delivery, business intelligence, vending asset management and field service enable you to achieve higher sales, lower costs and improved margins. Additionally, you are able to remain flexible enough to respond to business demands driven not only by customers, but also by suppliers and retailers.

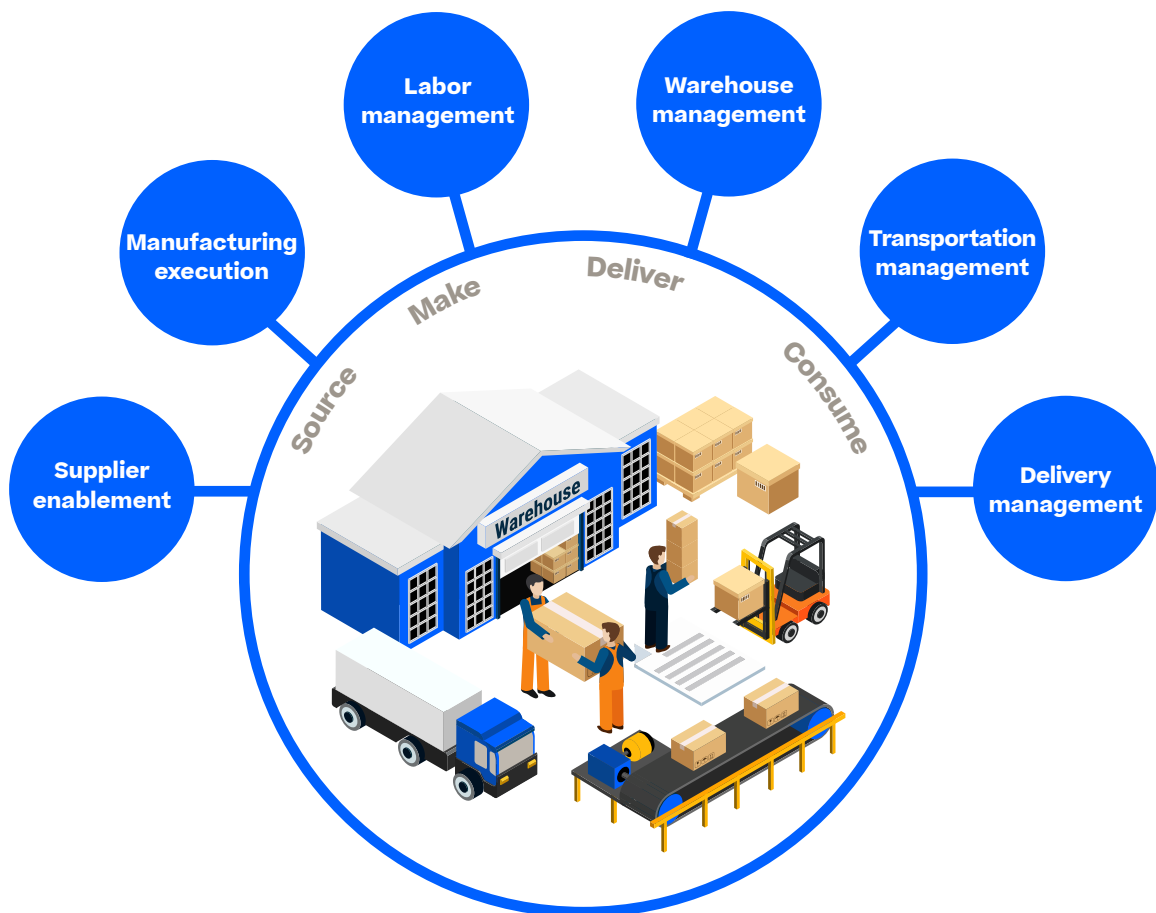


Supply chain visibility

Körber's management visibility solution strengthens managerial decision making with real-time visibility to key inventory, order and performance metrics for all Körber supply chain execution systems.

Supply chain event management

Körber's supply chain event management solution promotes proactive resolution of supply chain issues, thereby minimizing disruptions, eliminating the need for costly expedited shipping and increasing customer satisfaction.



Global execution platform

